

Boerdson

BluCom App

Operating instructions

Version: 1.0 Status: 2024/03/26

Contents

Explanation of symbols	3
Safety instructions	3
Intended use	4
Liability and warranty	4
Environmental protection.....	4
Scope of delivery.....	4
Contact.....	4
Overview of properties	5
Description.....	5
Configuration	5
Preparations.....	5
The BluCom app.....	5
Preparation (one-time)	5
Establish connection	6
Configuration	8
Example1: Setting accent boundaries.....	11

Explanation of symbols



This symbol, an exclamation mark in a filled triangle, indicates important operating or safety instructions in these operating instructions. Always read this information carefully.



This symbol indicates a tip and/or a special operating recommendation to make things easier for you.

Safety instructions



- Read these instructions, keep them in a safe place and only pass the device on with these instructions.
- Observe all warnings, follow all instructions and use the appliance only for the purpose and in the manner described in this manual.
- The product is not a toy. Keep it away from children and pets.
- Do not leave the packaging material lying around carelessly. Otherwise it could become a dangerous toy for children.
- Protect the product from extreme temperatures, direct sunlight, strong impacts, high humidity, moisture, flammable gases, vapors and solvents.
- Do not expose the product to mechanical stress.
- If safe operation is no longer possible, take the product out of operation and protect it from unintentional use. Safe operation is no longer guaranteed if the product:
 - shows visible damage,
 - no longer functions properly,
 - has been stored under unfavorable environmental conditions for a longer period of time or has been exposed to considerable transport stresses.
- Always handle the product with care. Impacts, knocks or even falling from a low height can damage the product.
- Avoid short circuits at the inputs and outputs.
- Never connect the battery with reversed polarity.
- Disconnect the battery from the speed controller after the ride.
- Before charging the battery, disconnect it from the speed controller.
- Check the model vehicle and the speed controller/motor for damage before each use. If you notice any damage, do not continue to use the model vehicle or speed controller/motor!
- Some parts of the speed controller can become very hot during operation. Risk of burns!
- Never block existing ventilation openings.
- Sufficient cooling of the speed controller must be ensured when operating the model. For this reason, do not wrap the speed controller in foam or similar materials; heat dissipation must be ensured.
- The drive must not be blocked. The resulting currents can cause irreparable damage to the motor and/or the speed controller.



- Make sure that you do not get any part of your body or other foreign objects caught in moving components when handling model vehicles. There is a risk of injury! Therefore, always jack up the model safely when making adjustments.
- Always switch on the transmitter first and move its control lever for motor control to the neutral position. Only then may the speed controller be fitted with a battery pack and switched on. When switching off, proceed in reverse order. This means that you first switch off the speed controller, disconnect the battery and only then switch off the transmitter.
- Before the transmitter is switched off, the speed controller must always be switched off first and the connection to the battery disconnected if necessary.
- The connection between the battery and speed controller must always be disconnected when the speed controller is no longer required.
- The maximum permissible power of the speed controller is limited. The maximum permissible current values vary depending on the battery voltage used. Please be sure to observe the technical data in these operating instructions. Failure to observe the limit values may result in irreparable damage to the motor and/or the speed controller. In the event of such damage, all guarantee/warranty claims are excluded!
- Have maintenance work and repairs carried out by qualified personnel only. Take the appliance to customer service if it has been exposed to rain or moisture, if liquid or foreign bodies have got into it or if it is not working normally.

Intended use

The BluCom app is used to configure Boerdson speed controllers. It communicates with the speed controller via Bluetooth using the BluCom module. It can be run on Android devices.

Liability and warranty

The statutory warranty provisions valid at the time of purchase apply. Intended use for non-commercial purposes is a prerequisite. Damage caused by improper handling or water is excluded. Tampering and modifications invalidate the warranty. Liability is limited to the purchase price. Liability for consequential damage is excluded. We reserve the right to make technical changes. All company names and product designations are trademarks of their respective owners. All rights reserved.

Environmental protection

Waste electrical and electronic equipment does not belong in household waste! Please use the free municipal disposal points.

Scope of delivery

- Android app as download
- Link to these operating instructions

Contact us

Do you have a problem or questions? Write us an e-mail to hilfe@boerdson.de, we will be happy to help you!

Overview of properties

- Configuration of the operating parameters of Boerdson speed controllers
- Reading out operating values from Boerdson speed controllers

Description

The Boerdson BluCom app is an Android software for configuring and reading out Boerdson speed controllers via smartphone.

Configuration

Many parameters of the ESC can be configured and thus adapted to your own use and taste. Configuration is very convenient using the BluCom module and the corresponding app. You can access all configurable parameters via Bluetooth.



You can purchase the BluCom module in our store: www.boerdson.de. The app can be downloaded free of charge from the store.

Preparations

Plug the BluCom module into the connector provided on the ESC. Now supply the ESC with power.

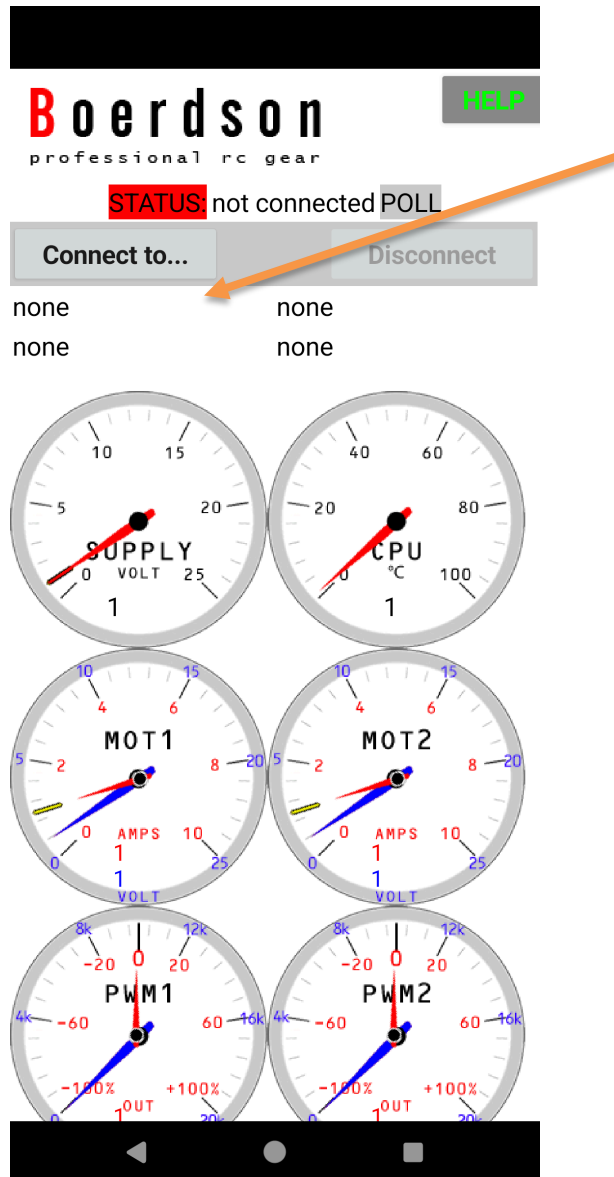
The BluCom app

Preparation (one-time)

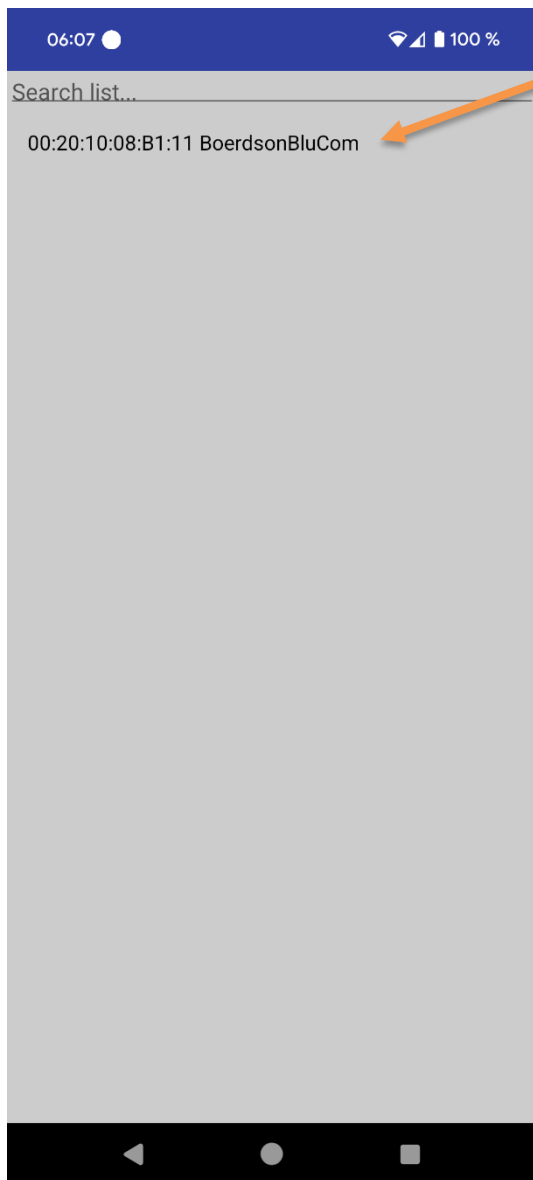
- Install the app on your smartphone
- Navigate to the app settings on your smartphone and allow "Find devices nearby"
- Activate Bluetooth on your smartphone
- Activate GPS (location) on your smartphone

Establish connection

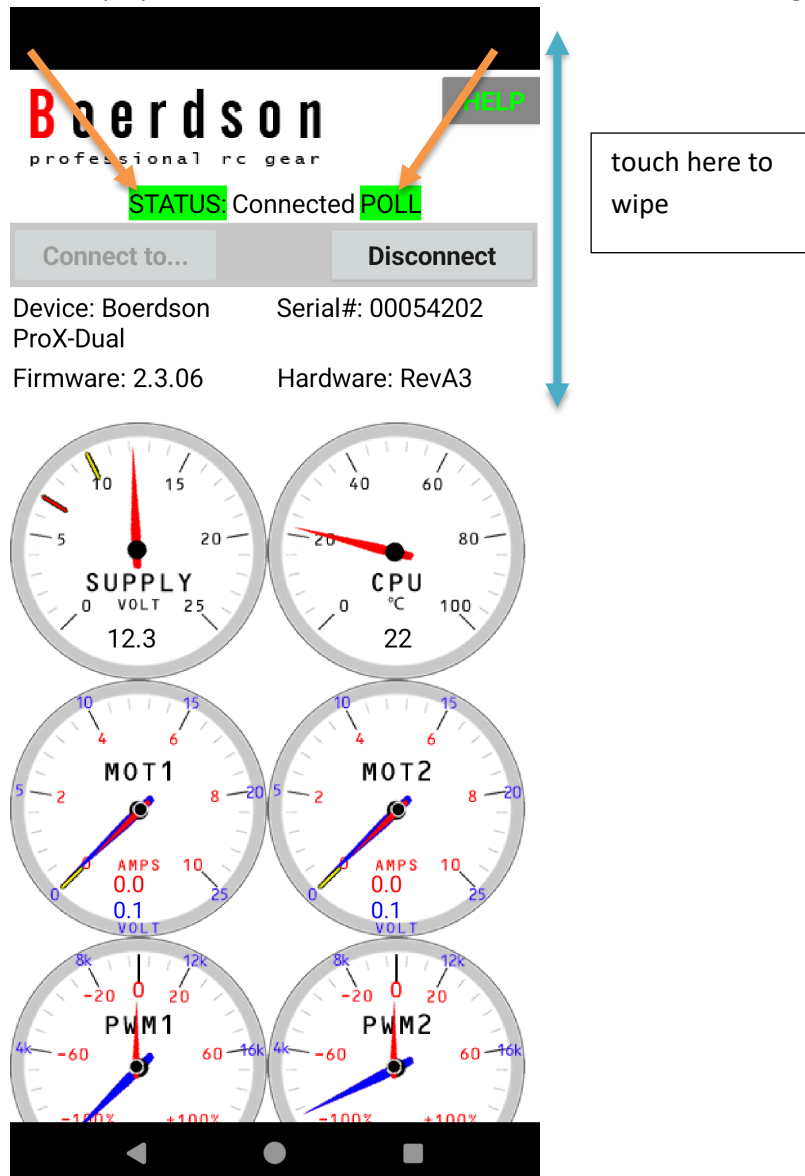
When you start the BluCom app, the app interface appears. Now press the "Connect to..." button.



Then select the "Boerdson BluCom" device from the list.



After a few seconds, the BluCom app is connected to the ESC and you receive the first real-time data. Connected" is now displayed behind "STATUS" and the "POLL" indicator flashes green.



As you drive your model, the data is continuously updated and the pointer instruments display the data.

Configuration

Swipe the instruments upwards to access the setting options. Swipe above or to the side of the instruments, as the image on the instruments themselves cannot be moved. The configuration buttons are located below the display

instruments.

ESC Configuration

ESC Mode:	DIFF	Select
Soft Mode:	ON	Select
Expo Strength:	1	Select
PWM null size:	1	Select
Vehicle Length:	1	Select
Vehicle Width:	1	Select
Ch A Invert:	INVERT	Select
Ch B Invert:	INVERT	Select
Output swap:	SWAP	Select
chA (thr) low:	1	Select
chA (thr) high:	1	Select
chB (steer) low:	1	Select
chB (steer) high:	1	Select
Supply warn:	1	Select
Supply shutoff:	1	Select
chA I limit:	1	Select

The respective name of the paramter is listed on the left, the value currently stored in the ESC is displayed in the middle, and on the right there are buttons that you can use to select new values. Once you have made the desired

changes, press "SEND-STORE-RESTART" and the data will be sent to the ESC and saved.

Expo Strength: 50 Select

PWM null size: 50 Select

Vehicle Length: 210 Select

Vehicle Width: 140 Select

Ch A Invert: NORM Select

Ch B Invert: NORM Select

Output swap: NORM Select

chA (thr) low: 8800 Select

chA (thr) high: 15600 Select

chB (steer) low: 8800 Select

chB (steer) high: 15600 Select

Supply warn: 9.5 Select

Supply shutoff: 7.1 Select

chA I limit: 0.9 Select

chB I limit: 0.9 Select

SEND-STORE-RESTART

0 sent, 0 answers, 0 Errors

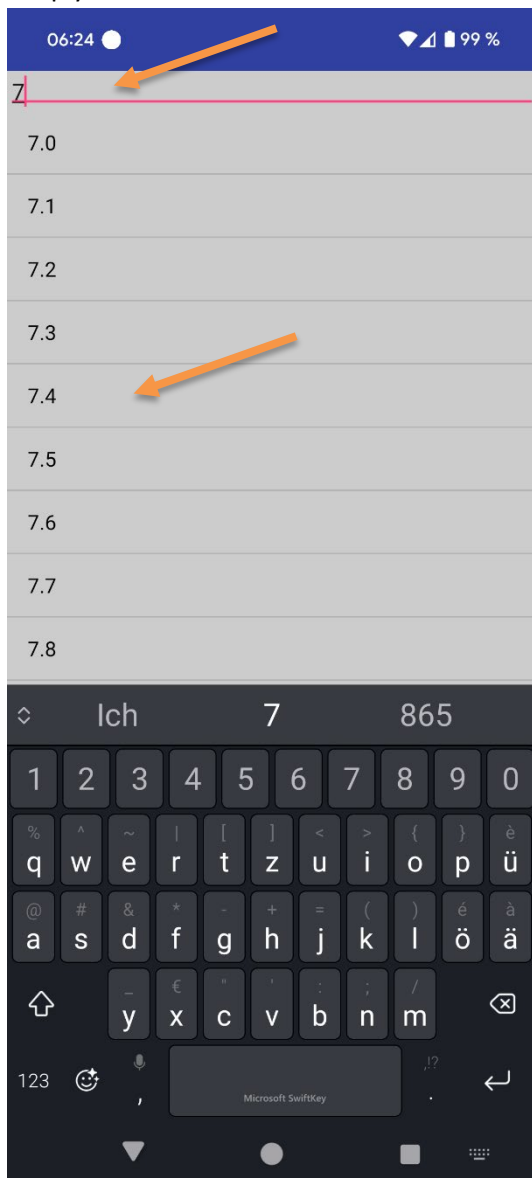
The ESC then restarts to accept the new data.

Congratulations! You can now easily read out and configure your Boerdson controller.

Example1: Setting accent boundaries

You want to change the battery limits for a 2S LiPo battery and have taken the following limits from the ProX-Dual operating instructions: Warning limit 7.4V and cut-off limit 6.6V

Simply select these values:



To navigate more quickly, use the "Search list..." input field. As soon as you start typing in this line, the list is filtered and thus reduced for faster selection.

Once you have made your selection, you will see the newly selected values in the yellow buttons.

Expo Strength:	50	Select
PWM null size:	50	Select
Vehicle Length:	200	Select
Vehicle Width:	140	Select
Ch A Invert:	NORM	NORM ▼
Ch B Invert:	NORM	NORM ▼
Output swap:	NORM	NORM ▼
chA (thr) low:	8800	Select
chA (thr) high:	15600	Select
chB (steer) low:	8800	Select
chB (steer) high:	15600	Select
Supply warn:	10.0	7.4
Supply shutoff:	7.0	6.6
chA I limit:	0.9	Select
chB I limit:	0.9	Select

SEND-STORE-RESTART

0 sent, 0 answers, 0 Errors

Now press the "SEND-STORE-RESTART" button, done!